

Steel Cladding Case Study CS-116-18

(Reprinted with permission from ArcelorMittal Dofasco's Steel Design, Fall 2018)

PRÉMON HARLEY-DAVIDSON Laval, Québec

Corrugated AZM150 Galvalume® steel cladding - fit for a Harley!

With a steel exterior and towering presence, the unique Premont Harley-Davidson dealership on the outskirts of Quebec City, like the motorcycles themselves, is built to be admired. Opened for business in August 2012, the approximately 8,000m² (86,000 sq. ft.) building contains a showroom, boutique, repair shop, museum and even a restaurant.

Located at 1071 Boulevard Pierre-Bertrand, near the axis of Route 358 and Autoroute Félix-Leclerc (A40), the building is sheathed with 2,787m² (30,000 sq. ft.) of 0.61mm (.0239") 22.2mm (7/8") corrugated AZM150 Galvalume steel cladding, coloured QC2642 Silver.

Why Galvalume? "It was a question of economy. The choice of a metallic exterior facing is economical. Also, it gives the sides of the building an industrial look. It is a bit in that spirit. It creates a look seldom seen elsewhere," says Stefan Landry, architect with Les Consultants DMG. Landry also acknowledges that the cladding is a good fit with the Harley Davidsons themselves.

Adding to the look is approximately 1,858m² (20,000 sq. ft.) of AMICO architectural series expanded metal APEX style 01, installed over the exterior walls and all the way up the sides of the six-story tower.

The total effect is an iconic building which, just like the no-nonsense Harleys themselves, never fails to make an impression.

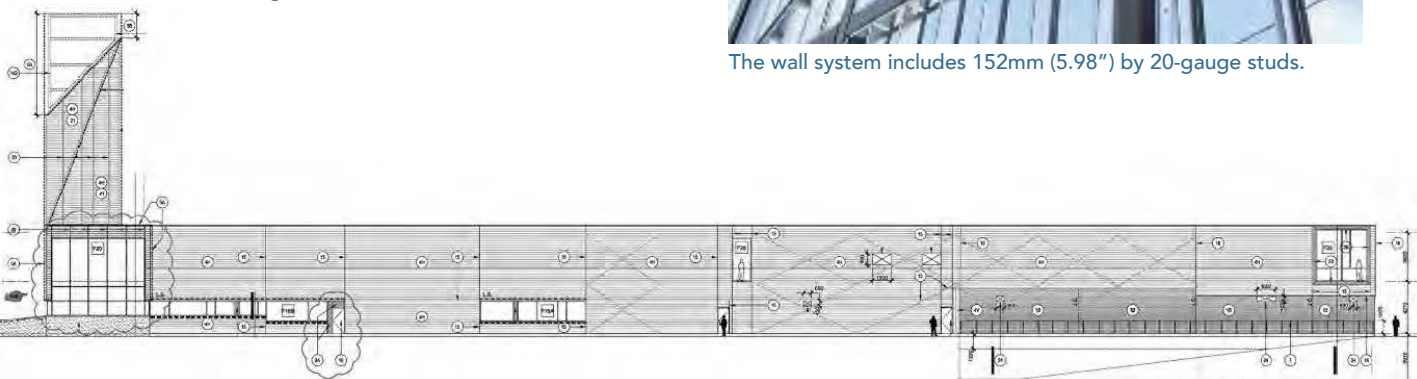
DESIGN AND CONSTRUCTION TEAM:

OWNER: Prémont Harley-Davidson
ARCHITECT: DMG Architecture and L'architecture d'Olivier Bourgeois and Régis Lechasseur
GENERAL CONTRACTOR: Les Constructions Gagnon
CLADDING SUPPLIER: Ideal Roofing Company Limited
CLADDING INSTALLER: Revêtements de la Capitale
EXPANDED MESH SUPPLIER: Revêtements de la Capitale



The wall system includes 152mm (5.98") by 20-gauge studs.

North elevation showing the extensive use of 22.2mm (7/8") Galvalume AZM150 wall cladding.





Installing the Galvalume. The top of the tower is left open.



Expanded metal mesh was installed over the Galvalume.

