



STAGELINE GROUP L'ASSOMPTION, QUEBEC

(Reprinted with permission from
ArcelorMittal Dofasco Steel Design, 2010)

DESIGN AND CONSTRUCTION TEAM

ARCHITECTURAL TEAM:
Consortium Allard Hamlin-
Lalonde

STRUCTURAL ENGINEER:
Groupe Canam Inc.

MECHANICAL ENGINEER AND
ELECTRICAL ENGINEERING:
BBA

BUILDING ENVELOPE SPECIALIST:
Groupe Canam Inc.

OWNER:
Groupe Stageline

GENERAL CONTRACTOR:
Construction G.

ROOFING SUPPLIER:
Carlisle SynTec Incorporated

CLADDING SUPPLIER:
Groupe Canam Inc.

INSTALLERS:
LK Industrie

Prefabricated steel wall sections speed building construction



Opened in early 2008, the Stageline Group's 3,670m² (39,503 sq. ft.) building in L'Assomption, Québec is a mixed-use mobile stage manufacturing plant, maintenance shop, assembly and pre-production building and administrative offices on three floors. LEED-certified, it is said to be the most energy-efficient industrial building in the province. It consumes 69.2% less energy than a similar building built to the standard of the National Energy Code for Buildings.

The plant's construction includes 113 pre-fabricated and load-bearing Murox wall panels. Built by Groupe Canam Inc. in its St-Georges, Québec manufacturing plant, Canam then moved the finished panels to the construction site to be installed on the building. According to Charles Alexander, director, business development, Canam Group, Boucherville, the project architecture firm, Consortium Allard Hamelin-Lalonde, chose this method of construction because Canam built the panels in a controlled environment and they enabled an accelerated project delivery schedule.

The panel construction includes a total of 2,861m² (30,796 sq. ft.) of unpainted Murox

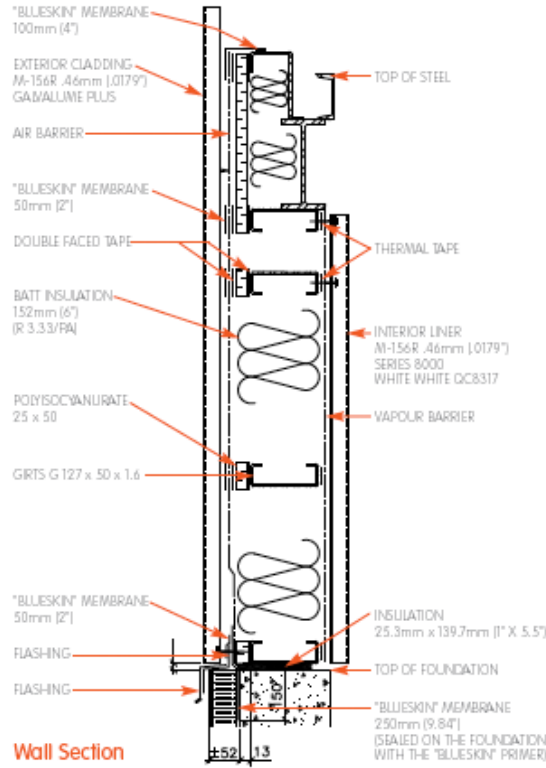
M156-R, .46mm (.0179") Galvalume Plus™ over steel girts, I-beams and an interior liner. The panels are filled with rigid insulation to yield a thermally efficient building envelope of R20 - R30.

The Galvalume Plus sheets overlap and are attached to the structural girts at one-foot intervals with No. 12 - 14 one-inch self-drilling screws with neoprene washers. The Galvalume Plus, with its recycled content, contributed 5% to the LEED certification.

In 2009, the building won two awards from l'Ordre des architectes du Québec, including the first prize for Sustainable Development in the industrial building category.

Panel construction includes a total of 2,861m² (30,796 sq. ft.) of unpainted Murox M156-R, .46mm (.0179") manufactured from ArcelorMittal Dofasco's Galvalume Plus™.





Stageline Group's new LEED certified mobile stage manufacturing plant in L'Assomption, Québec, consumes 69.2% less energy than a similar building built to the standard of the National Energy Code for Buildings.



Canadian Sheet Steel Building Institute
 652 Bishop St. N., Unit 2A
 Cambridge, ON N3H 4V6
 Tel: (519) 650-1285
 Fax (519) 650-8081
 www.cssbi.ca