



**BRUNSWICK STREET
BAPTIST CHURCH
FREDERICTON, NB**

(Reprinted with permission from
ArcelorMittal Dofasco Steel Design, Spring 2013)

**DESIGN AND CONSTRUCTION
TEAM**

ARCHITECT:
exp Architects Inc.

GENERAL CONTRACTOR:
King Construction

STEEL CLADDING SUPPLIER:
Agway Metals Inc.



The Brunswick Street Baptist Church was feeling some growing pains. It was no longer large enough to accommodate the needs of its parish. In 2009, the Fredericton church hired exp Architects Inc. to construct a 3,345m² (36,000 sq. ft.) new addition that wouldn't clash with the stonework of the original building. The new space would be used for a community centre and classrooms. Construction began in the summer and was completed in the Fall.

Prepainted steel presented economical and aesthetic advantages

“We were challenged by trying to put a modern structure next to an older landmark,” says Brent Stewart, Manager of Architectural Services for exp Architects Inc. “Whenever you have to put a new building next to an older structure, you have many design issues that need to be taken into consideration.”

“King Construction helped make this such a successful job. It looks wonderful,” Anderson says. “It’s normally a tricky installation to run panels horizontally. This is the nicest horizontal install I’ve ever seen.” According to Stewart, the use of steel was a starting point for the project because of its economical and aesthetic advantages.

“What I like about this job is it’s the old meeting the new,” says Don Anderson, Manager of Building Products, Atlantic Region for Agway Metals Inc. in Nova Scotia. “All the colours blended together very nicely with the old construction. We had two different colours blending in with the old stone.”

“We knew we were going to use some stone to match the existing stonework on the original building, but we were able to do the detailing and composition by using steel,” he says. “The steel did a lot to compliment the arrangement of the windows – we got it lined up quite nicely. The panel alignment and trim work we used to accompany it were achieved in an economic manner. Between the glass, aluminum framing and three profiles of steel, the materials all worked together to complement the existing building.”

The architect used Agway Metals HF-12NF 305mm panels in Tan QC18315 and HF-6NF 305mm panels in Beige QC18021 for the walls and 4-150 914mm panels in Tan QC18315 for the Canopy roof panels. Colours are from ArcelorMittal Dofasco’s Perspectra Series. The installation was completed by King Construction of Fredericton.

“The new construction blends seamlessly with the heritage building,” adds Anderson. “The client was very happy,” he says. “The renovation resulted in a very nice construction.”





"We were able to do the detailing and composition by using steel, the steel did a lot to compliment the arrangement of the windows."

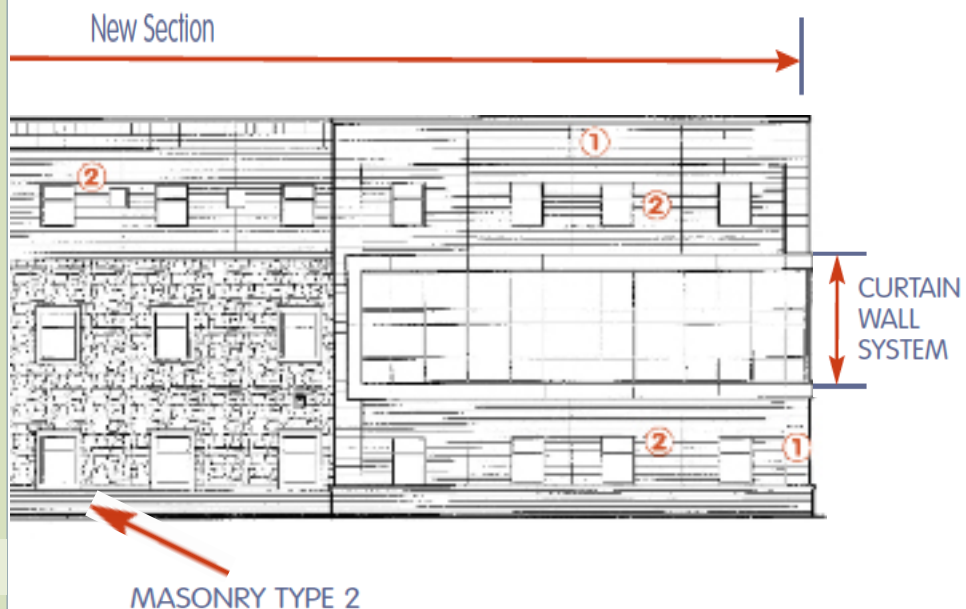
- Brent Stewart, exp Architects



The new addition, incorporating a community centre and classrooms, is clad in stone and pre-painted galvanized steel, which compliments the character of the original church structure.

**NORTH ELEVATION
BRUNSWICK STREET SIDE**

- 1 Agway Metals HF-12NF
.76mm (.0299"),
305 mm (12") coverage coloured Tan QC18315
- 2 Agway Metals HF-6NF
.76mm (.0299")
305 mm (12") coverage coloured Beige QC18021



**Canadian Sheet Steel
Building Institute**
652 Bishop St. N., Unit 2A
Cambridge, ON N3H 4V6
Tel: (519) 650-1285
Fax (519) 650-8081
www.cssbi.ca